

C-BMS COMBINED BATTERY MONITORING & MANAGEMENT

C-BMS is a combined battery monitoring and management system designed for use in security vehicles or light defence platforms that do not require a fully military specification solution. C-BMS can also be used to provide a "hybrid" solution where a mix of military and civil specification components may be possible - meeting the requirements but keeping costs to a minimum.

C-BMS monitors essential battery information such as state of charge, health, time remaining and net charge / discharge. It can display this via a dedicated monitoring panel or output onto a third party CAN Bus architecture for graphical display on a multi function vehicle screen.

C-BMS automatically controls the charge and discharge of up to three separate battery banks, preventing battery damage, improving vehicle electrical reliability and safety while reducing battery replacement costs and vehicle downtime.

– **Actively monitors and displays** battery voltage, state of charge (% remaining), state of health (% remaining), net charge / discharge (amps) and time remaining (hours/mins)

– **Intelligent control** for military specification power gateways or conventional relays to distribute power in the most efficient manner between multiple battery banks while saving them from deep discharge damage.

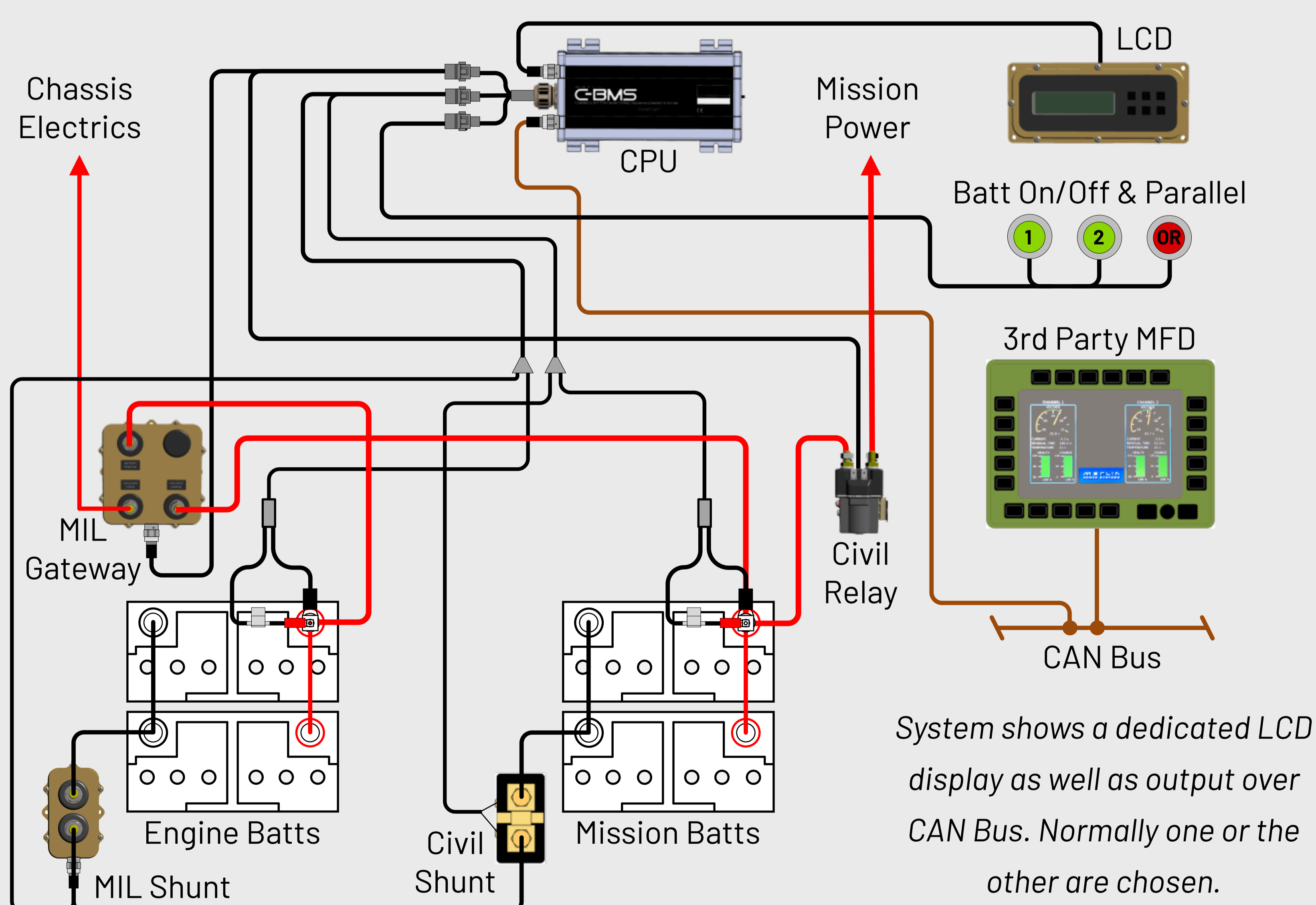
– **Improves silent watch times** crew safety and saves money spent on unnecessary battery replacements and fuel.

Installation Example:

The overview below shows C-BMS in a hybrid "Civil / MIL-Spec" twin battery bank system.

In this case it is controlling both a MIL-Spec Power Gateway and operating a civil specification high current relay in the same system. It is also using sensing via a MIL-Spec current shunt and additionally a civil bare shunt.

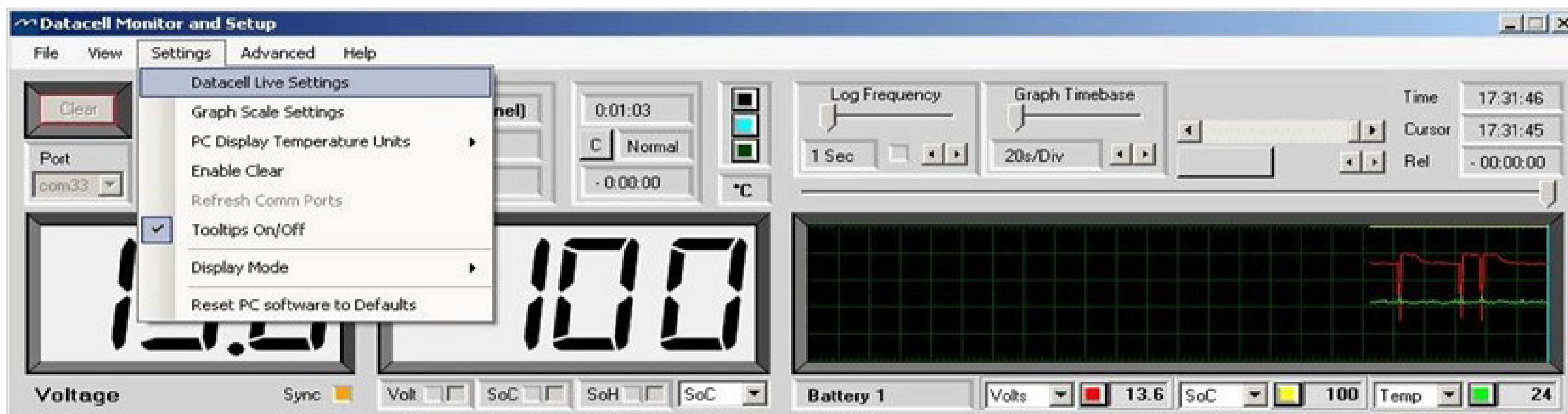
The system is controlled by momentary switches on the dash for remote battery isolation and emergency parallel.



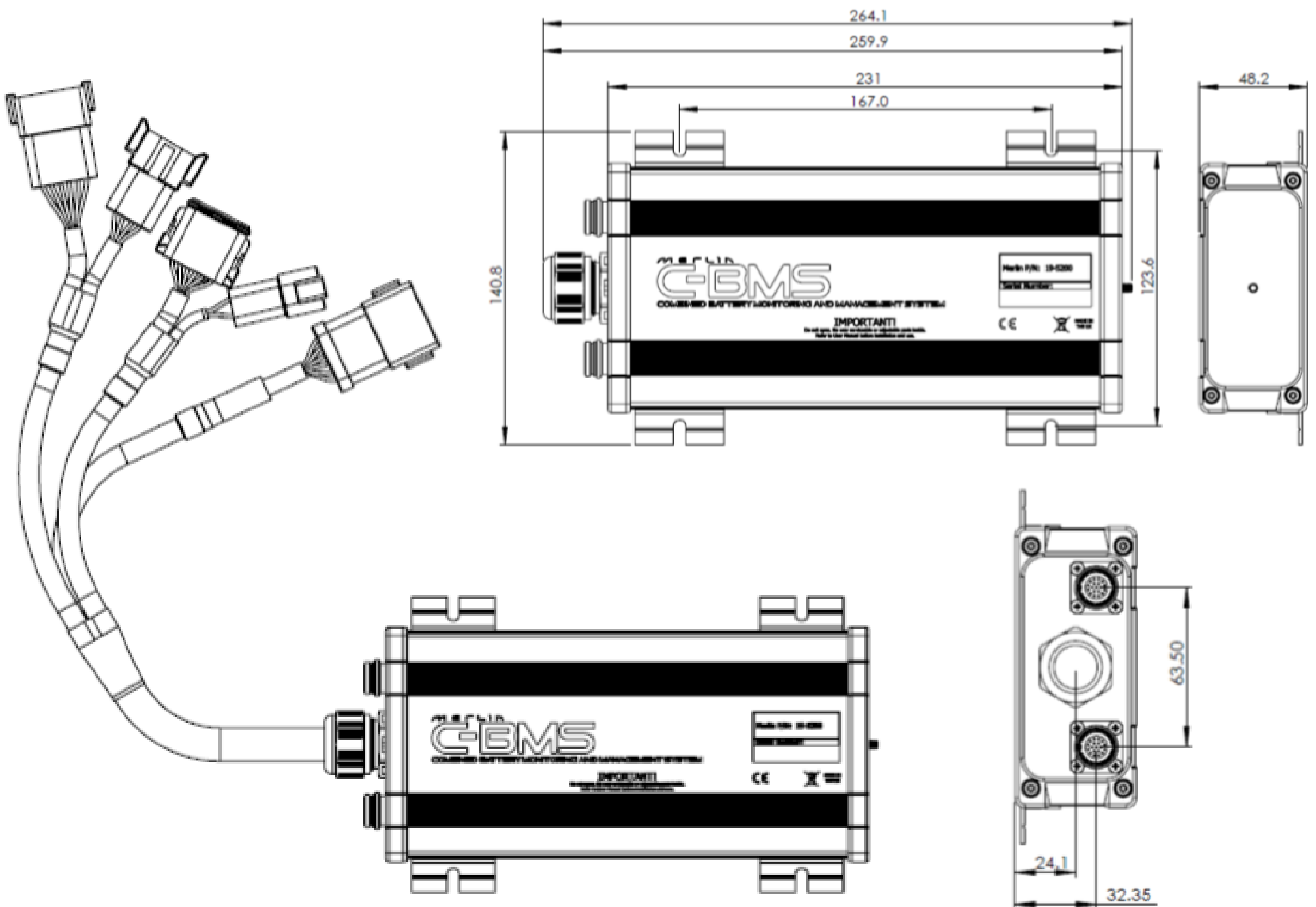
C-BMS COMBINED BATTERY MONITORING & MANAGEMENT

Software:

C-BMS is supplied with windows software allowing user configuration and real time monitoring and datalogging.



Example: 3rd Party CAN Bus Integration



All specifications are provided in best possible faith but may be subject to change without notice. The Merlin Logo, slogan "The Power People" and M-Power are trade marks of Merlin Equipment Limited. All business is transacted according to our Standard Terms & Conditions, a copy of which is available upon request.