

# DATACELL IIE - BATTERY MONITORING SYSTEM

DataCell Iie continuously monitors up to four separate battery banks simultaneously, allowing a vehicle commander to see at a glance exactly how much power they have at their disposal for operating critical electrical equipment such as communications, counter measures and weapons systems.

DataCell Iie's state of health readings allow batteries to be identified as requiring replacement before they fail during a mission and its time remaining readings are essential for understanding silent watch capability.

Information can be viewed either on a dedicated night vision goggle compatible LCD screen or broadcast onto the vehicles' CAN Bus network and portrayed graphically on a third party multi-function display.

– **Suitable for up to 4 battery banks**

– **Monitors**

voltage, state of charge (% remaining), state of health (% remaining), temperature, time remaining (hrs/mins) and net charge / discharge (amps)

– **Saves money on battery replacements** by avoiding over discharge

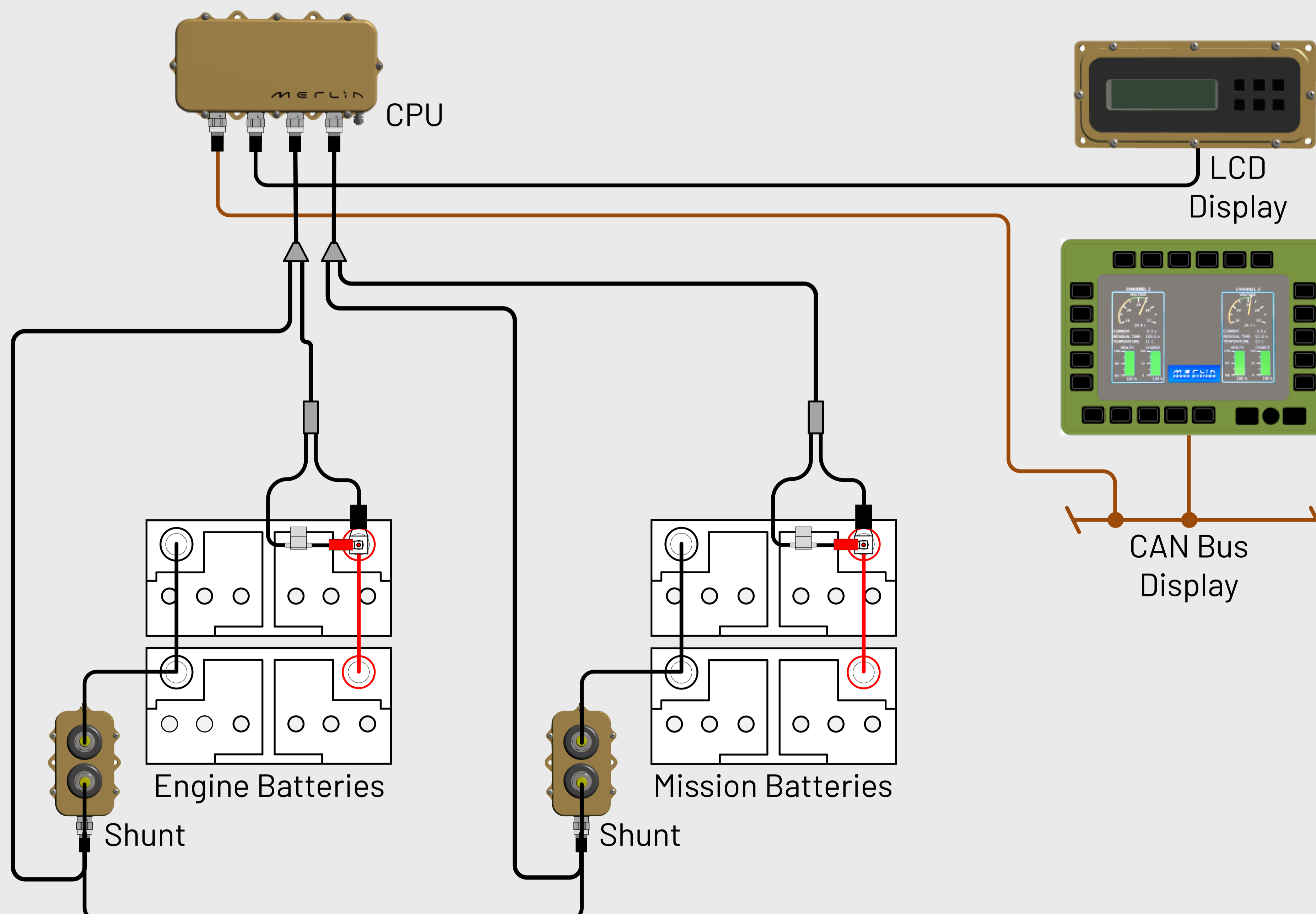
– **Allows key tactical decisions**

to be made based on a knowledge of the vehicles' remaining energy reserves and enables preventative maintenance

## Installation Example:

The overview below shows a two battery bank installation and DataCell Iie connected to both its own LCD display and to a vehicle CAN Bus network.

Current shunts are available rated at either 500A or 1000A

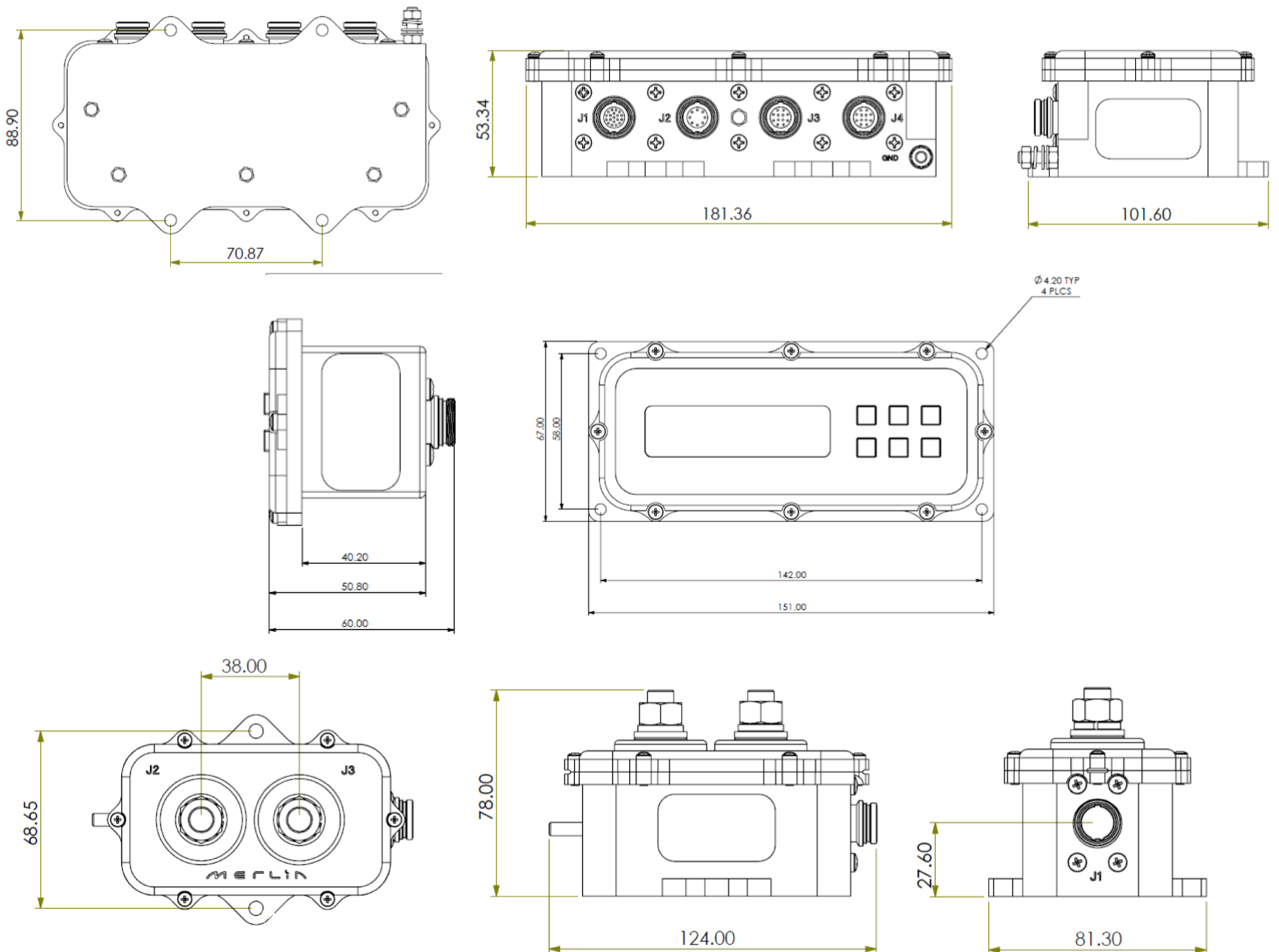
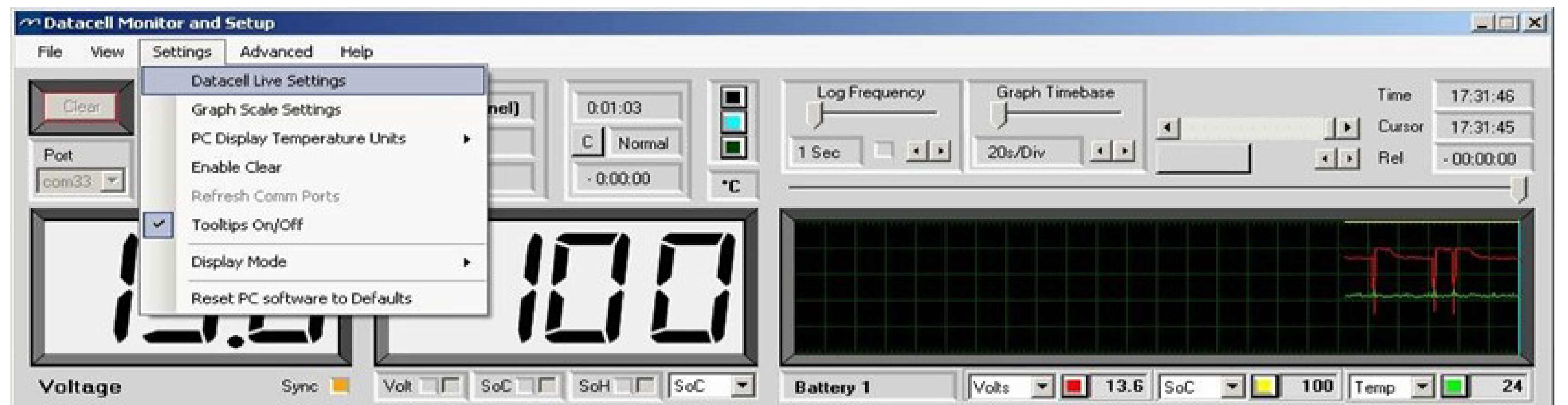




# DATACELL IIE - BATTERY MONITORING SYSTEM

## Software:

DataCell Iie is supplied with windows software allowing user configuration and real time monitoring and datalogging.



All specifications are provided in best possible faith but may be subject to change without notice. The Merlin Logo, slogan "The Power People" and M-Power are trade marks of Merlin Equipment Limited. All business is transacted according to our Standard Terms & Conditions, a copy of which is available upon request.