



# DataCell Remote LED Display Panel

## 1.0 Device Description

The DataCell Remote LED Display Panel is easily connected to either the Merlin DataCell I or the Merlin DataCell II Battery Monitor. Once connected by the single “MerlinNet” cable, the unit automatically recognises which monitor it is plugged in to, and how many battery banks are being monitored.

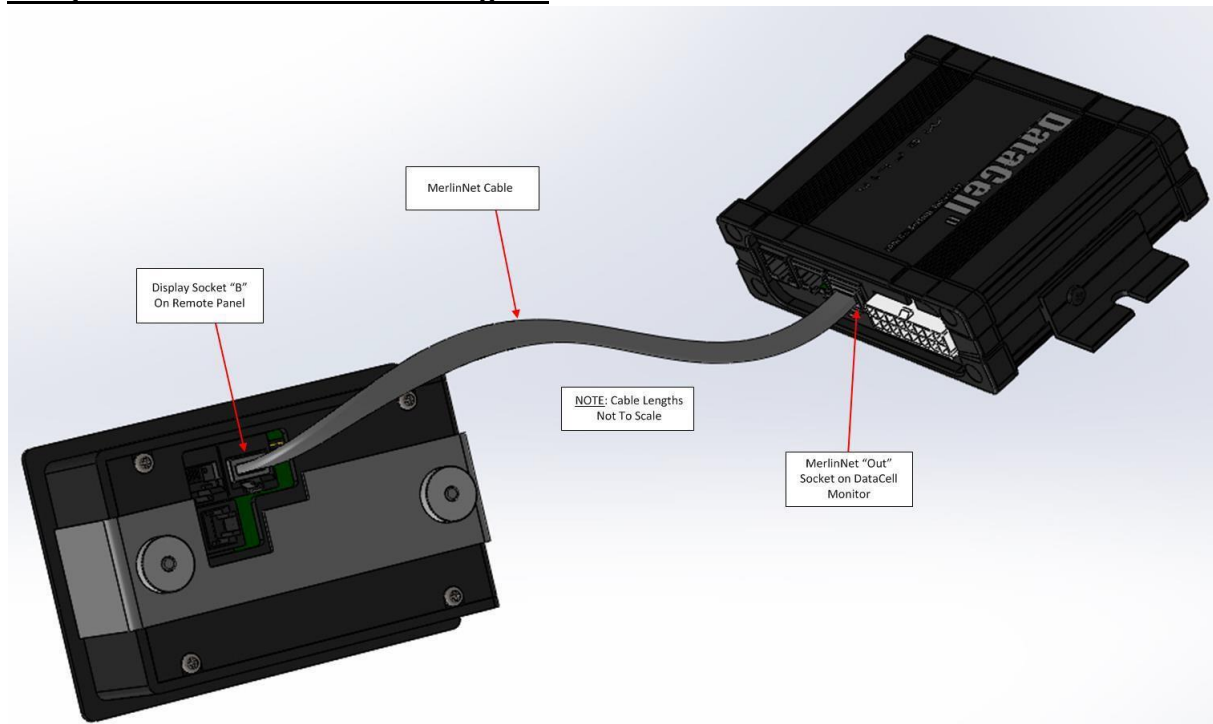
The unit is designed to show alarm status (configured in the DataCell monitors thru PC software) of any battery bank.

Simple operation using the three buttons on the facia also enables switching between battery banks, display brightness control and display of the following real-time battery data:

- Battery Voltage
- State of Charge
- Amp Hours\*
- Battery Temperature\*
- Time Remaining\*
- State of Health\*
- Amps\*

\* when connected to DataCell II monitor only.

## 2.0 Quick Reference Connection Diagram



### **3.0 Cautions and Warnings**

**CAUTION and WARNING! Download and read the full manual before use or installation. Web link is at the bottom of this page.**

**Not all practices that may be hazardous to the product, your electrical system and your health/well-being are listed below!**

**Working in the vicinity of batteries, engines, engine room equipment and on vehicles, boats and other installations is hazardous. Please ensure that all local and national government guidelines pertaining to Health & Safety Requirements are adhered to. The following identified hazards are by no means exhaustive:**

- **Remove positive battery terminals from all batteries within the installation**
- **Ensure the engine cannot be started**
- **Higher battery voltages are potentially lethal. In all cases, Merlin products are designed for nominal 12 and 24V DC systems. Do not attempt modification or addition to systems where higher voltages may be present (such as electric vehicles or electric marine drives) without consultation with experienced engineers.**

### **4.0 Regulatory/Certificate of Conformity**



Declaration of Conformity: Merlin Equipment Limited, Trading as Merlin Power Systems hereby declares that the product marketed as DataCell Remote LED Display Panel is in compliance with the requirements of the EMC Directive 2014/30/EU.



The unit complies with RoHS (Reduction of Hazardous Substances) Directive 2011/65/EU. At the end of life, it should be disposed of as normal electrical waste.

DataCell Remote LED Display Panel has been tested to and surpasses ISO-7637-2 for use on vehicles.

Signed:

James Hortop  
Managing Director  
Merlin Power Systems UK  
Date: 20<sup>th</sup> March 2019

**For full Installation and User Guide, visit [www.merlinequipment.com](http://www.merlinequipment.com)**

**Merlin Equipment Ltd  
Clyst Court  
Hill Barton Industrial Estate  
Exeter, Devon BH17 7BA  
United Kingdom**

**Tel: +44 (0) 1202 697979**

**Merlin Power Systems USA  
332-4 West Montauk Highway  
Hampton Bays  
New York, NY11946  
United States of America**

**Tel: +1 (631) 594 5102**

**[www.merlinequipment.com](http://www.merlinequipment.com)**